



MPS ServiceNet

About MPS Technical References Customer Service Distributor Locator Rep Locator Industry Links News Contact Us

Login

- enter email -

- enter password -

Search

Pole Line Hardware F-Z >> Pins

Pole Top

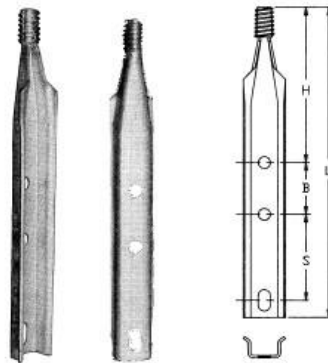
[Print This Page](#) [Print PDF Catalog Page\(s\)](#)

Features:

- Pressed steel pole top pins with nylon alloy or cast lead insulator threads are mounted against the pole by 5/8-inch bolts.
- Lower hole is slotted 11/16 x 1-1/4-inch on both two and three hole styles.

Material:

- Pin body: Pressed Steel, Hot Dip Galvanized
- Insulator Threads: Nylon Alloy or Lead



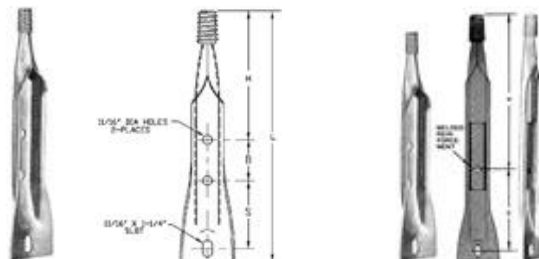
Pressed Steel - Straight Base							
Catalog Number	Thread Material	Length (In)	S	B	H	Insulator Thread (Inches)	Weight/100 (lbs)
J715Z	Nylon Alloy	15	5	(2-hole)	9	1	232
J1368ZSL	Nylon Alloy	18	5	3	9	1	280
J1368Z	Nylon Alloy	18	5	3	9	1	283
J744Z	Nylon Alloy	24	5	3	15	1	450
J720Z	Nylon Alloy	20	8	(2-hole)	11	1-3/8	327
J740Z	Nylon Alloy	20	8	(2-hole)	11	1	320
J1220Z	Nylon Alloy	20	5	3	11	1	314

Notes:

1)* Lower slot is open (non-enclosed) on J1368ZSL

Features:

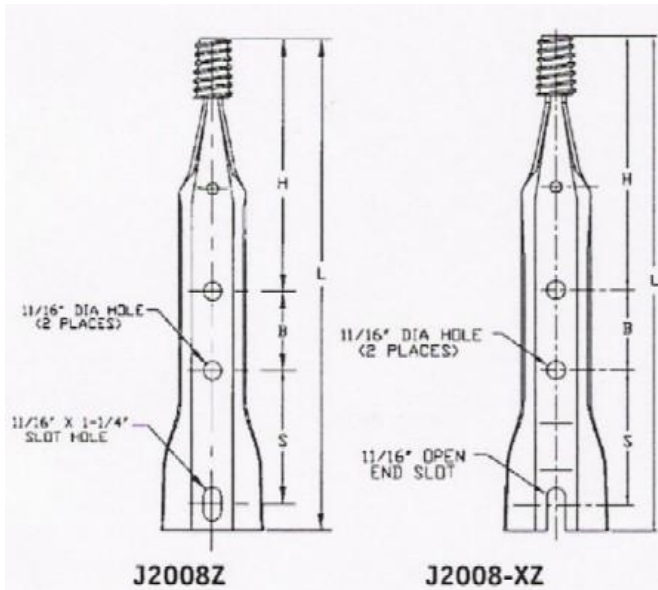
- The lower end of these pins is flattened and flared to give a solid bearing surface when mounted with the flange against the pole.
- The 24" long pins are reinforced by a channel welded into the back which gives a rigid box section and greatly increased strength.
- Holes are for 5/8" mounting bolts.



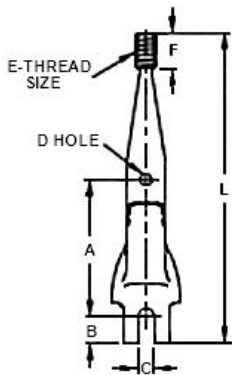
J0228SES

J2010 & J2011

Flared Base - Closed/Folded Neck							
Catalog Number	Thread Material	Length (In)	S	B	H	Insulator Thread (Inches)	Weight/100 (lbs)
J2008SES	Lead	18	5	3	9	1	323
J2010	Lead	24	8 (2-hole)	15		1	530
J2011	Lead	24	8 (2-hole)	15		1-3/8	590



Flared Base - Semi-Closed/Folded Neck							
Catalog Number	Thread Material	Length (In)	S	B	H	Insulator Thread (Inches)	Weight/100 (lbs)
J2008-XZ	Nylon Alloy	18	5	3	9	1	280
J2008Z	Nylon Alloy	18	5	3	9	1	280



Flared Base - Open Lower Slot									
Catalog Number	Thread Material	L	A	B	C	D	E	F	Weight/100 (lbs)
J26945Z	Nylon Alloy	24	8	1-9/16	11/16	11/16	1	1-3/4	430
J26947Z	Nylon Alloy	24	8	1-9/16	11/16	11/16	1-3/8	2-1/8	450
J26946Z	Nylon Alloy	24	8	1-9/16	13/16	13/16	1	1-3/4	430
J26948Z	Nylon Alloy	24	8	1-9/16	13/16	13/16	1-3/8	2-1/8	450